

THE  
INSPIRED  
HOME  
SHOW.

CELEBRATING  
125  
SHOWS

Exhibitor Connect  
Plan | Showcase | Promote



## Freight Target Floor Plans

The Inspired Home Show is a targeted event. This means exhibitors are assigned a specific date and time for moving into an exhibit hall. Shipments delivered to the advance warehouse will be delivered to the exhibit space by the designated target date and time. Shipments delivering to the Show site must adhere to the assigned target date and time for delivery. Please note, the transportation carrier may be turned away if they arrive too early for delivery, they will be directed to return closer to the target date and time.

Use these floor plans in conjunction with your booth number to identify the assigned date and time your freight must arrive at McCormick Place's Marshalling Yard.

[VIEW FLOOR PLANS](#)



## Update Your Connect 365 Profile

Keeping your company listing up-to-date is extremely important for buyers to be able to find your company, brands and products before, during and after the Show.

The information entered into Connect 365—the Show’s online search tool—is automatically included in the 2025 Mobile App. The 2025 Mobile App will be the only Show Directory on-site. By completing your company listing, you are giving buyers and news media the ability to search for your company’s products and location on the Show floor.

[UPDATE YOUR PROFILE](#)

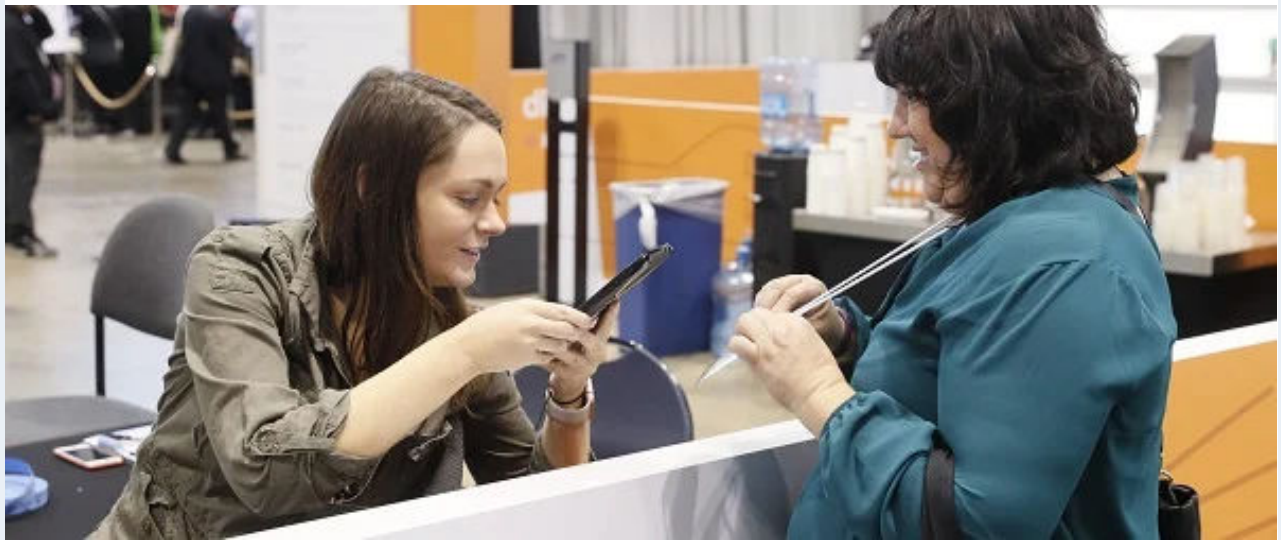


## Last Chance for Discounted Hotel Rates

Early-Bird rates expire after December 31, 2024. Save money and secure the lowest rates in the city when you book within the IHA onPeak hotel block.

Book Now Before They're Gone!

[BOOK NOW](#)



## Reserve Your Lead Retrieval

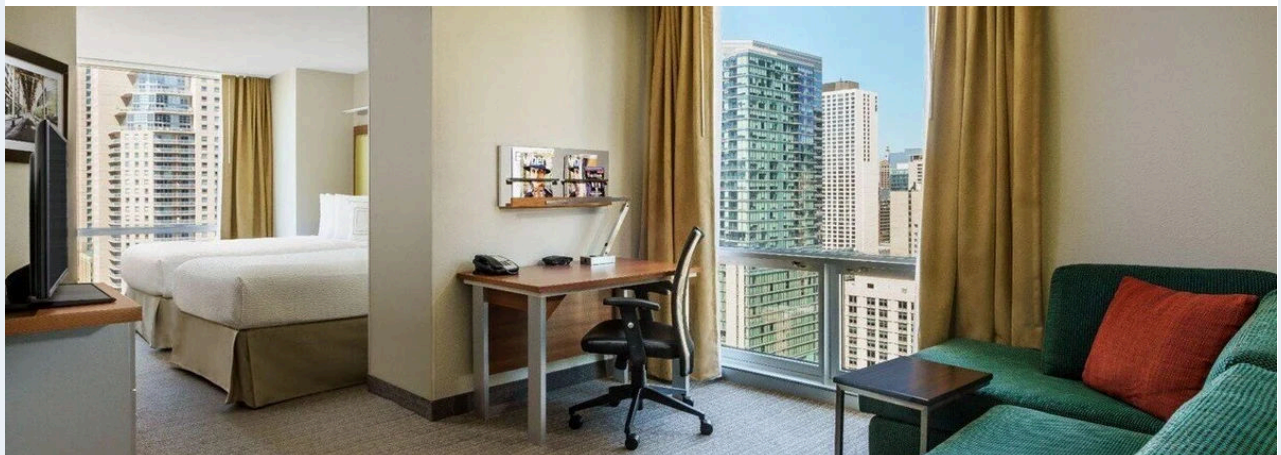
Exhibiting success is much more than just purchasing a booth and showing up at the event. Meeting qualified Buyers and turning them into loyal customers is the true measure of ROI. XPress Leads lead retrieval equipment and programs are the keys to a highly productive onsite experience and acquiring buyer emails.

Watch the video below to learn all you need to know!

**Early-Bird Rate Deadline: December 19**

[WATCH VIDEO](#)

[ORDER NOW](#)



**Feature Hotels: River North Collection**

Choose from 5 unique hotel brands, each offering a distinct vibe tailored to your style—perfectly located in River North. Find your fit and book your stay today!

**Aloft Chicago Downtown River North:**

- Rates Starting at **\$146**
- Complimentary Guestroom Wifi

**Fairfield Inn & Suites Chicago Downtown River North:**

- Rates Starting at **\$146**
- Complimentary Hot Breakfast Buffet

**Moxy Chicago:**

- Rates Starting at **\$135**
- Tech-savvy, Contemporary Rooms

**Residence Inn Chicago Downtown River North:**

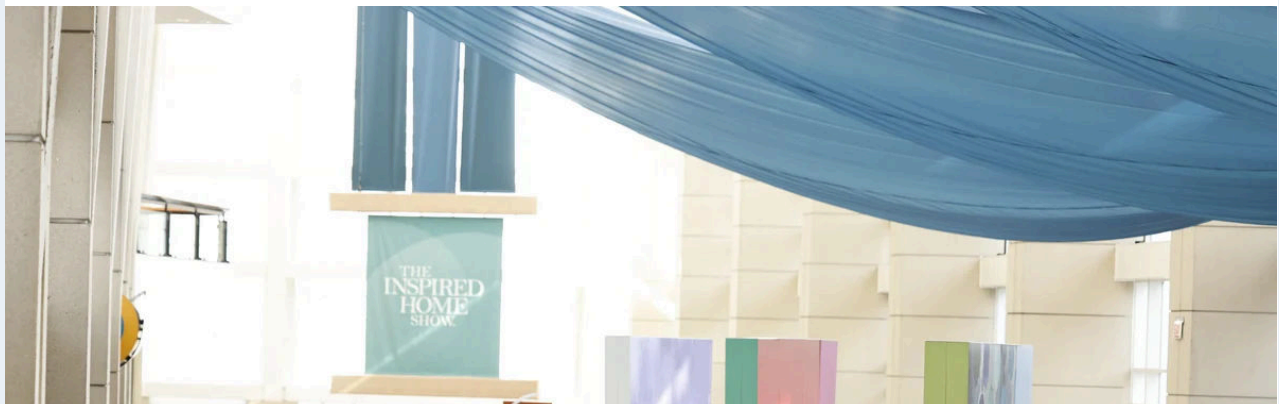
- Rates Starting at **\$165**
- Extended-stay Suites Feature Full Kitchens

**SpringHill Suite Chicago Downtown River North:**

- Rates Starting at **\$155**
- Complimentary Hot Breakfast Buffet

[LEARN MORE](#)

[BOOK NOW](#)



## Exhibitor Deadlines

Stay up-to-date on all upcoming deadlines using the Exhibitor Action Checklist.

### Upcoming Deadlines Include:

- December 17 - [Final Date for Hanging Sign Approval](#)
- December 19 - [Lead Retrieval Early-Bird Rate Deadline](#)
- December 31 - [Last Day to Book Early-Bird Hotel Rates](#)

[VIEW FULL CHECKLIST](#)

---

**Due to the holidays, the next Exhibitor Connect will be sent on Tuesday, January 7, 2025.**

Exhibitor Connect is developed to guide exhibiting companies in their participation at The Inspired Home Show. Each week you will receive relevant, deadline-driven topics covering both operations and marketing to ensure your company is on track to have a successful Show.



**IHA** | INTERNATIONAL  
THE HOME AUTHORITY | HOUSEWARES  
ASSOCIATION

IHA, 6400 Shafer Ct, Rosemont, IL 60018, U.S.

[Unsubscribe](#) [Manage preferences](#)